

Installation Instructions

NGX 1000W Amplifier Rebuild Kit Kit # 26735305

Kit contains a 1000-watt replacement amp and Deluxe 4 channel preamp with instructions for installation.

Tools Required

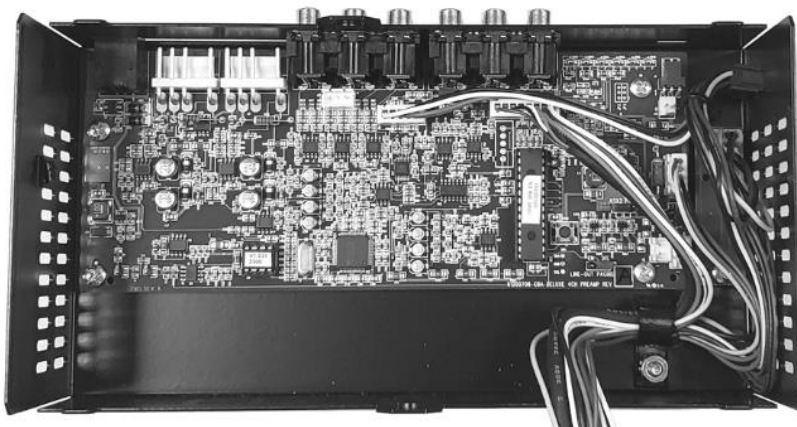
- #2 Phillips Head Screwdriver
- T10 TORX driver

Estimated Repair Time: 15 mins.

Parts Included with this Kit

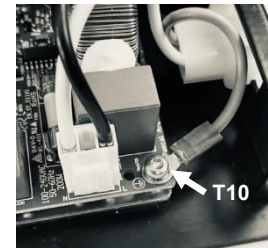
Item #	Part Number	Description	Quantity
1	61200708	Preamplifier – Deluxe 4 Channel with Line-out	1
2	40983903	Amplifier 1000-Watt Pascal	1
3	22167744	Label – Lineout	1
4	26735355	These Instructions	1

1. Power OFF the jukebox and unplug it from the wall.
2. Disconnect the wiring going to the amplifier assembly and remove it from the jukebox. **WARNING: If equipped with a secondary amp, it is imperative that you wait until rail voltage LED is fully out. Failure to adhere to this warning may result in failure of primary and/or secondary amplifiers.**
3. Remove the two Philips screws holding the metal cover (one on connector side and one on opposite side) and then carefully open the amplifier assembly.
4. Replace the Preamp:
 - a. Unplug the wiring going between the preamp and amplifier. Make note of which wires go where (taking a photo is helpful).
 - b. Remove four (4) screws holding the preamp to the inside of the top cover and remove the two (2) small screws on the outer side cover that hold the RCA jacks in place. Remove and replace the preamp using same screws. Note: If not already in place, position the label (item 3) over the top of the INVERT CH1 CH3 text on the front of the amplifier cover. (This is easier to do with preamp removed).



5. Replace the Amp:

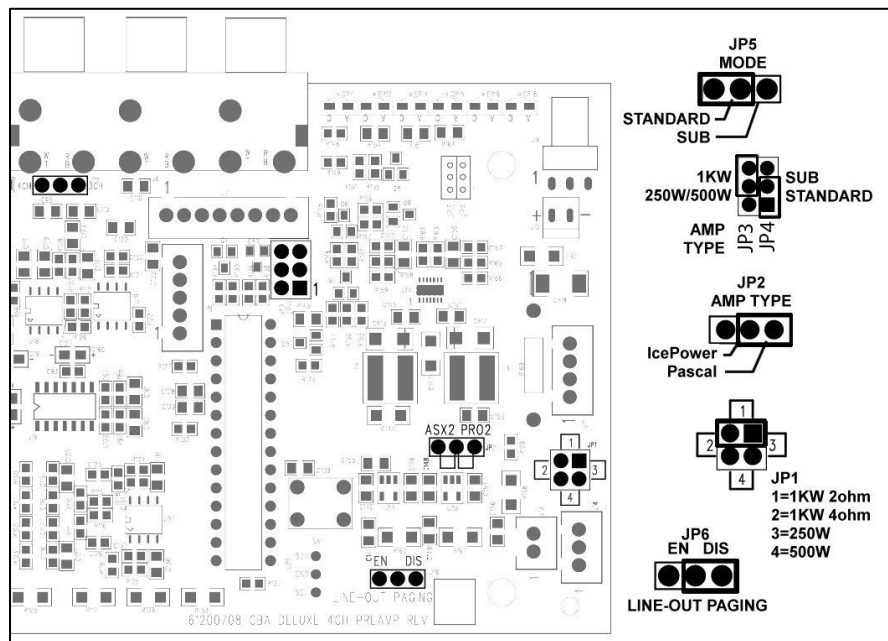
- a. Remove the remaining wiring attached to the amp. Make note of which wires go where (taking a photo is helpful).
- b. Remove the six (6) flat-head screws located on the underside of bottom cover which hold the amp in place.
- c. Remove the single (1) TORX head screw which secures the grounding wire at corner location of board.
- d. Remove and replace the amp using same screws.



- 6. Reconnect all wire harnesses taking care not to bend pins and assuring complete connector insertion.
- 7. Reassemble the top and bottom cover taking care not to pull or pinch wiring. Reinstall the two (2) cover screws.
- 8. Reinstall the amplifier assembly into the jukebox and reconnect all amplifier wiring.
- 9. Power up the jukebox and test to be sure the amplifier is working.

Preamplifier Jumpers

There are 6 jumpers on the preamplifier (JP1 – JP6). The jumpers have been factory set to the setting used for the Pascal 1000-watt amplifier as shown below:



JP1: LOAD – Used to set the speaker load.

JP2, JP3: AMPLIFIER TYPE – Used to configure the preamplifier power supply. Set both jumpers to match which amplifier is being used. If these jumpers are set in the wrong position, the preamplifier may not work. If the Status LED indicates an error of seven blinks, verify JP2 is set correctly.

JP4, JP5: MODE – Set these jumpers to the STANDARD position for normal operation. The SUB position enables a High Pass Filter on Channel 1 and a Low Pass Filter on Channel 2.

JP6: LINE-OUT PAGING – This jumper enables/disables paging over the Line-out outputs.